



KRAEMER

Spun in
Nazareth,
Pennsylvania

EXPERIENCE



Experienced

YARN

Stotts Ranch
Worsted



Sizes:
Finished Chest
37.5,(41, 44)''

MC: 3 (3, 4)
CC: 2 (3, 3)

Length 21
(22,23)''

Sample knitted in
MC—Natural
CC—Purple

GAUGE

20 sts & 21.75 rows =
4'' in Stitch Pattern A
in the round after
blocking

16'' circular needle
24'' circular needle
US #6 (4mm)
US #7 (4.5mm)
US #7 double points

Ranch Rose Sweater

By Kate Lemmers



Knit a luxurious fair isle pullover and matching hat for someone special. This sweater features a vertical fair isle pattern which helps create a slimming silhouette.



DESIGNER NOTES:

Pattern written for smallest size with other sizes in parentheses, when only one number is listed it applies to all sizes.

Natural (White) Stott's Ranch will need to be blossomed, soak yarn for 20 minutes in lukewarm water, then Microwave in water for 3 minutes. Let cool. Remove excess water and hang to dry

Charts A through C are located on page 4

Stitch patterns A & C are filler sts - sweater sizing can be adapted by increasing and decreasing these sts

Sweater hemmed by starting with a Provisional CO. feel free to use your favorite.

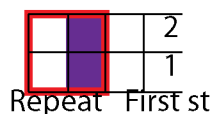
First st after marker is the seam st, on both body and sleeves. This st will always be knit with MC. For sleeves all decrease will be made on each side of this st.

Feel free to switch to DPNs if/when 16" circular needle is too big.

With Larger needle, using your favorite provisional method, CO 188 (204, 220) sts. With MC and smaller needle knit one row. Join to knit in the round being careful not to twist. Knit for 1½," Purl one round (Turning Round) Switch to larger needle and placing a front marker on needle to mark beginning of the round. Begin color work. *Work Chart A over the first 8 (12, 16) sts, start Chart B at row 29 (20, 18), then work Chart C over the next 7 (11, 15) sts [94 (102, 110) sts]. Place back marker and repeat from * to end [188 (204, 220) sts]. Continue in established pattern, working rows 29 (20, 18) to 32, then repeat rows 1 thru 32 until piece measures 13 (13.5, 14)" from Turning Round [14.5 (15, 15.5)" from CO], ending 6 (7, 7) sts before beginning of the round marker.

Armhole Shaping: BO 13 (15, 15) sts, continue in established pattern to 6 (7, 7) sts before next marker, BO 13 (15, 15) sts, complete the round in pattern [162 (174, 190) sts]. Place a back marker on RHN, *CO 7 steek sts starting with MC and alternating between CC and MC, place a front marker, continue in established pattern across the front of the garment to next set of BO sts. Place a front marker on RHN, *CO 7 steek sts starting with MC and alternating between CC and MC, place a back marker, continue in established pattern across the back of the garment [176 (188, 204) sts]. The sts between the front and back markers are your sleeve steeks. Work steek sts pattern every row as follows: K1MC, *k1CC, k1MC repeat from * 3 times (Chart D shown below).

Chart D



At the same time, decrease 1 sts each side of steek every other round 5 (6, 7) times as follows: *Knit 7 steek sts in pattern, k1, k2tog, continue in established stitch pattern, to 3 sts before next marker, SSK, k1, repeat from *. When all decrease are done there will be 156 (164, 176) total sts [7 steek sts, 71(75, 81) front sts, 7 steek sts, 71(75, 81) back sts]. Continue in established pattern until piece measure 18.5 (19.5, 20)" from turning round (pattern row 31 if you are getting row gauge).

Neck Shaping: Work in pattern over 24 (25, 25) sts after steek, work 23 (25, 31) sts in pattern then slip these sts onto a piece of waste yarn, complete round in pattern. Work in pattern until the front sl sts, place front marker, CO 5 steek sts starting with MC and alternating between CC and MC, place front marker and complete round. Work the same steek pattern (Chart D) over 5 neck steek sts. **AT THE SAME TIME**, maintaining pattern as best you can, decrease 1 sts each side of neck steek 5 times as follows: Round 1: Work to 3 sts before neck steek, ssk, k1, work steek sts, k1, k2tog, complete round in established pattern.



Round 2: Work all sts in pattern.

When all decrease are done there will be 128 (134, 140) total sts [7 steek sts, 19 (20, 20) left front st, 5 steek sts, 19 (20, 20) right front sts 7 steek sts, 71 (75, 81) back sts].

Continue in established pattern until piece measures 21 (22, 23)" from Turning Round, ending between back of garment and steek sts. BO 7 steek sts, work 19 (20, 20) sts in pattern, BO 5 steek sts, work 19 (20, 20) sts in pattern, BO 7 steek sts, work 71 (75, 81) sts in pattern. Slip all live sts to holder or waste yarn. Sew and cut armhole steeks. Slip sts back onto needle and with RS facing, Three Needle BO 19 (20, 20) sts at each shoulder edge together, slipping the remaining 33 (35, 41) back neck sts onto a holder.

Sleeves: Between steek and body sts, using MC and 16" larger circular needle, starting at lower left armhole, pick up and knit 34 (35, 37) sts up front, 1 st in shoulder seam, and 34 (35, 37) sts down the back, CO 13 (15, 15) sts [82 (86, 90) sts]. Place beginning of the round marker after 6th (7th, 7th) CO st. Note: *First st after marker is the seam st, all decrease will be made on each side of this st, this st will always be knit with MC.* Knit seam st, then work all of chart A over 80 (84, 88) sts, Knitting last st in MC to complete the round. There will be 3 MC sts in this round, the seam st and one st on each side of the seam st. Work even in Chart A pattern for 2".

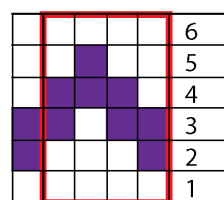
Sleeve Shaping: Decrease 1 sts each side of seam st every other row 5 (0,0) times, [72 (86, 90) sts]. Decrease 1 sts each side of seam st, every 4th row, 16 (20, 20) times [40 (46, 50) sts]. Switch to DPNs as needed. Work even in pattern until piece measure 15.5 (16.5, 17.5)" from shoulder pick up, ending 3 (6,0) sts before beginning of the round marker. Move beginning of the round maker to this spot.

Cuff: Size Large ONLY, maintain seam st throughout cuff.

Work Chart E over 7 (13, 0) sts, work Chart F over 33 (33, 49) sts and 6 rounds. Maintaining Chart E over first 7 (13, 0) sts, work chart G over 33 (33, 49) sts and 11 rounds. Maintaining Chart E over first 7 (13, 0) sts, work Chart F over 33 (33, 49) sts and 6 rounds. Break CC. With MC knit one round, purl one round, switch to smaller needles knit for 1 1/2". BO loosely. Repeat for other sleeve.

Collar: Sew and cut collar steek. With MC and Larger 16" circular needle, starting at right shoulder seam, knit 33 (35, 41) sts off holder, pick up and knit 14 (14, 16) st down left front, knit 23 (25, 31) sts off holder, pick up and knit 14 (14, 16) sts up right front [84 (88, 104) total sts]. Join CC and knit one round. Work Chart F repeat 21 (22, 26) times around for 6 rounds. Knit one round with CC, break CC. Knit 1 round, purl one round switch to smaller 16" needle and knit for 1 1/2", Knit one more round, BO loosely. Block and sew down hems and finish steeks.

Chart F



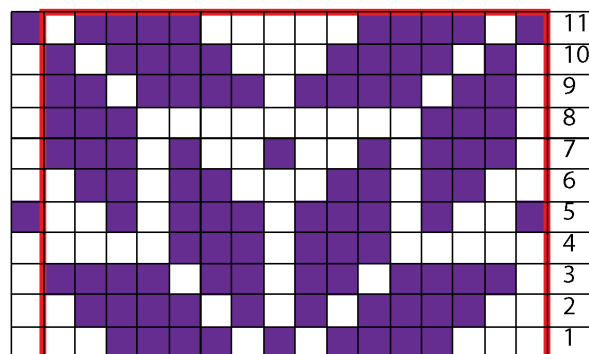
Last st

Chart E



Last St

Chart G



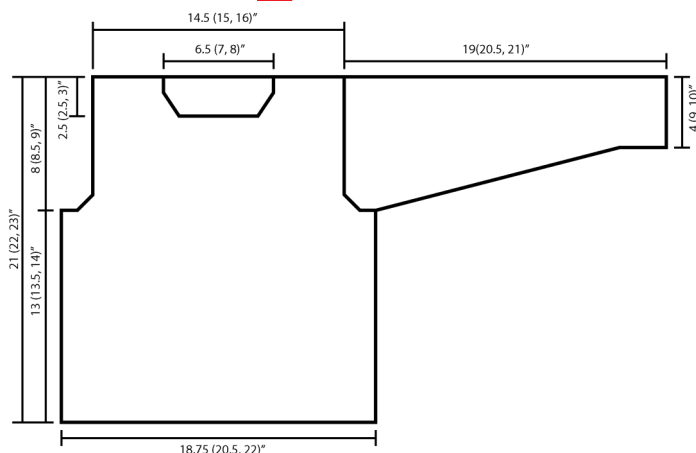
Last st

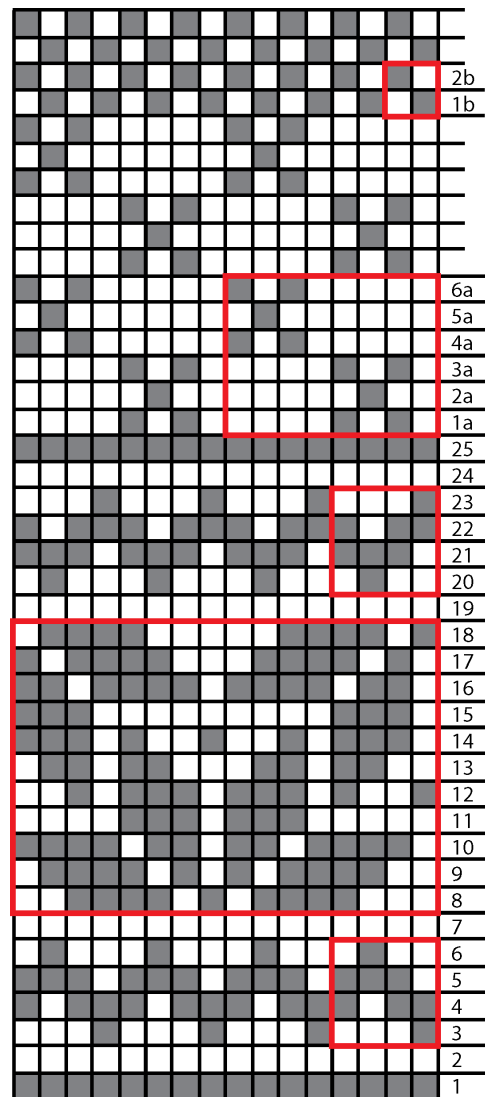
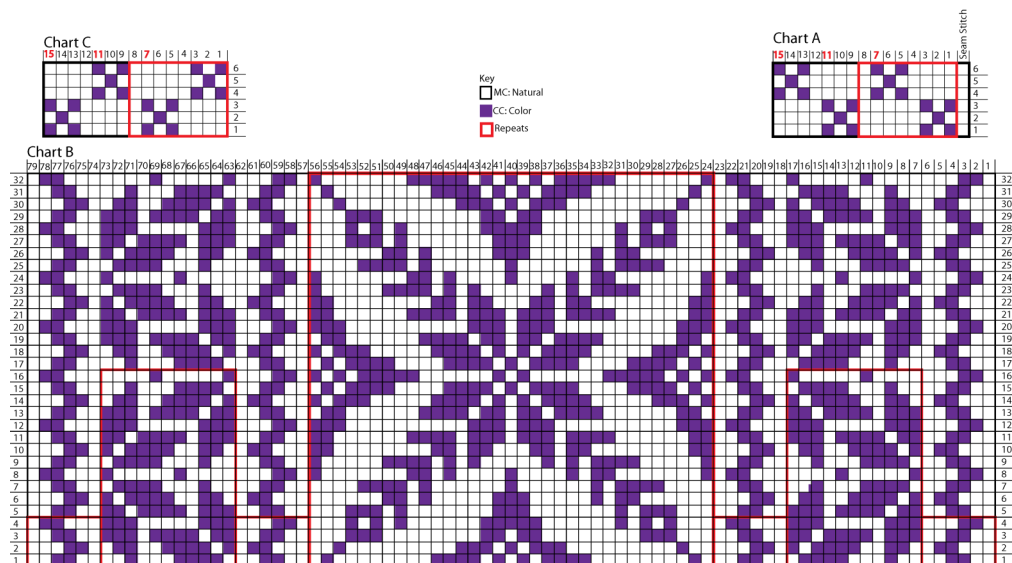
Key

MC: Natural

CC: Color

Repeats





Hat:

With smaller needle and waste yarn, using your favorite provisional method, CO 112 sts With MC, begin knitting, knit one row then join to knit in the round being careful not to twist.

Knit for 1" Purl one round (Turning round)

Switch to larger needle and begin chart at row 1. Work rows 1 thru 25 of chart, then repeat rows 1a thru 6a until piece measures 10" from turning round. (11" from CO) ending with round 6a.

Crown shaping: Switching to DPNs when necessary, being pattern rows 1b & 2b AT THE SAME TIME begin shaping crown as follows: Round 1:*K11, SK2P repeat from * Round 2: this round and all even rounds work in established pattern.

Round 3:*K9, SK2P repeat from *

Round 5:*K7, SK2P repeat from *

Round 7:*K5, SK2P repeat from *

Round 9:*K3, SK2P repeat from *

Round 11:*K1, SK2P repeat from *

16 sts remain. Cut yarn and pull thru remaining sts, pull to inside and secure.

Lining: When hat is dry, remove Provisional CO, slipping sts onto smaller needle. With RS facing and MC begin knitting in the round until piece measures 5" from turning round. Begin crown shaping as follows:

Round 1:*K12, k2tog repeat from *.

Round 2: this round and all even rounds, knit.

Round 3:*K11, k2tog repeat from *.

Round 5:*K10, k2tog repeat from *.

Round 7:*K9, k2tog repeat from *.

Round 9:*K8, k2tog repeat from *.

Continue decreasing in this manner until 16 sts remain. Pull yarn thru sts and secure, due to the fact that this is the lining, yarn end will have to be neatly woven in on the RS.

Finishing: Make tassel with remaining yarn. Attach to the top of the hat. Feel free to sew lining to hat about 1.5" from turning round if you so desire.

Key

- MC: Natural
- CC: Color
- Repeats

Hat Graph

We are committed to excellence in our products and strive to make these instructions as accurate and complete as possible. However, we cannot be responsible for the variance of individual knitters and crocheters, human error, or typographical mistakes. If you have any questions, please e-mail us at info@kraemeryarns.com

COMMONLY USED KNITTING ABBREVIATIONS

| | | | | | |
|---------------------|----------------------------------------------|--------------------|-----------------------------------------------|--------------|-------------------------------------------------------------------------|
| beg | begin | LH | left hand | sl | slip |
| BO | bind off | M1 | make one (increase 1 stitch) | ssk | slip 1, slip 1, knit 2 slipped stitches together |
| CC | contrasting color | MC | main color | st st | stockinette (stocking) stitch (1 row K, 1 row P) |
| CN | cable needle | P | purl | st(s) | stitch(es) |
| CO | cast on, cast off | p2sso | pass 2 slipped stitches over | tbl | through back of loop |
| cont | continue | P2tog | purl 2 stitches together (1 stitch decreased) | tog | together |
| dec(s) | decrease(s)/decreasing | patt rep(s) | pattern repeat(s) | WS | wrong side |
| dpn | double-pointed needles | patt(s) | pattern(s) | wyib | with yarn in back |
| eor | every other row | PM | place marker | wyif | with yarn in front |
| g st | garter stitch (K every row) | psso | pass slipped stitch over | yo | yarn over |
| inc(s) | increase(s)/increasing | pwisw | purlwise | yon | yarn over needle |
| K | knit | rem | remain(ing) | () | repeat instructions in parentheses number of times indicated |
| K1, s1, pssw | knit one, slip one, pass slipped stitch over | rep | repeat | * | repeat instructions following asterisk as indicated or until end of row |
| K2tog | knit 2 together | RH | right hand | [] | instructions in square brackets refer to larger sizes |
| K2tog tbl | knit 2 together through back loop | rnd(s) | round(s) | | |
| knwise | knitwise | RS | right side | | |